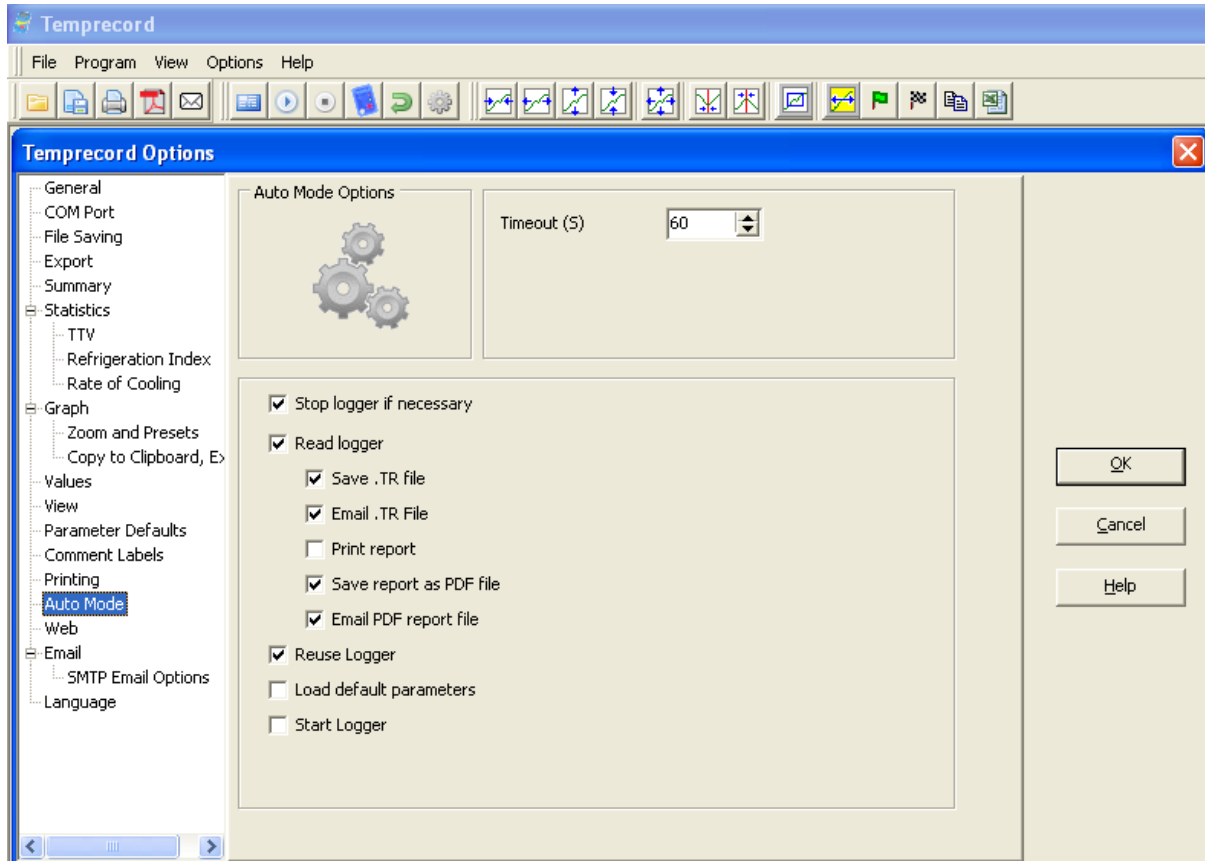


Auto Mode

Time saving feature when processing batches of loggers.



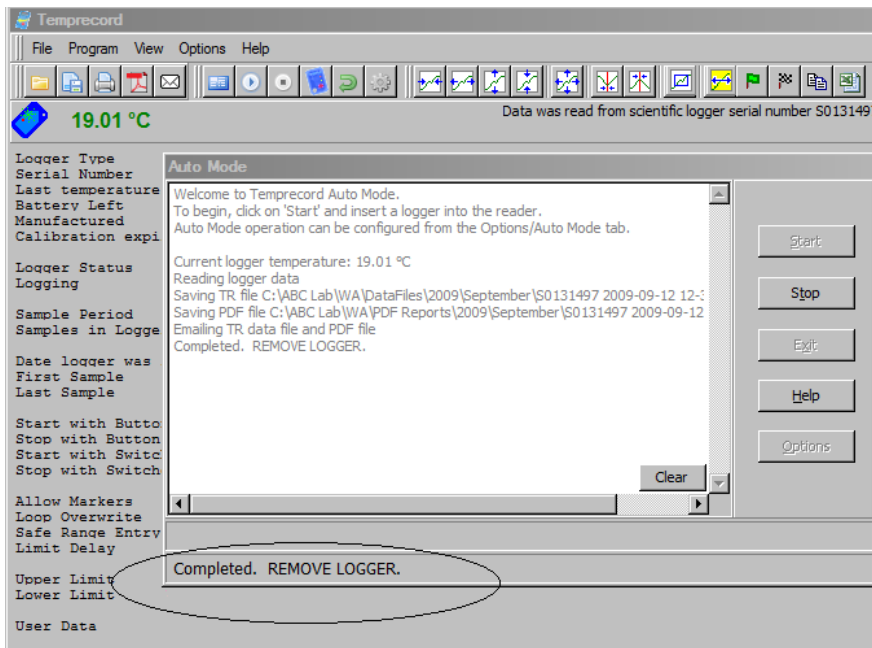
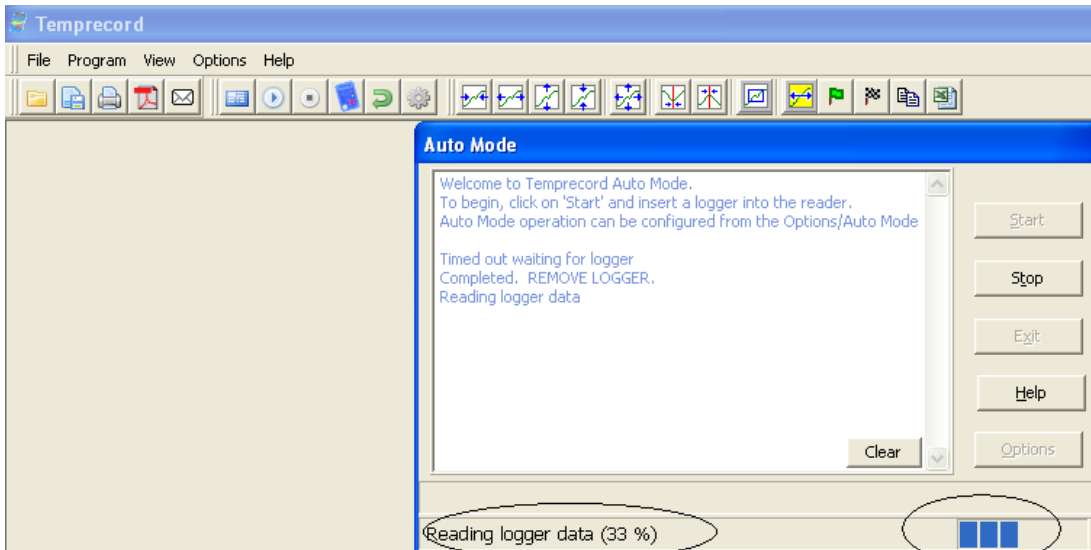
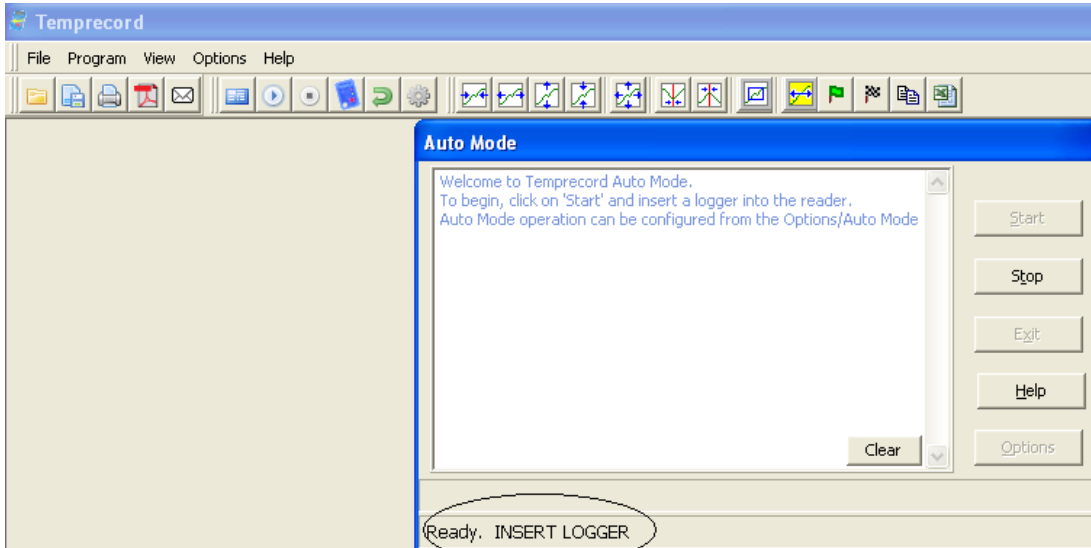
Enabling the Auto Mode Options:

- On the **Options** menu, the index runs vertically down the left hand side.
- To enable the functions you want to automate, select **Auto Mode** and tick the appropriate box, as shown.
- To save a file either in TRW or PDF format, the software will automatically enable the “read logger” option as the file must be read before saving.
- Auto Mode will automatically process the default parameters set (also on Options tab), if selected in the Auto Mode screen.

To start Auto Mode, click Auto Mode button on toolbar and follow prompts.

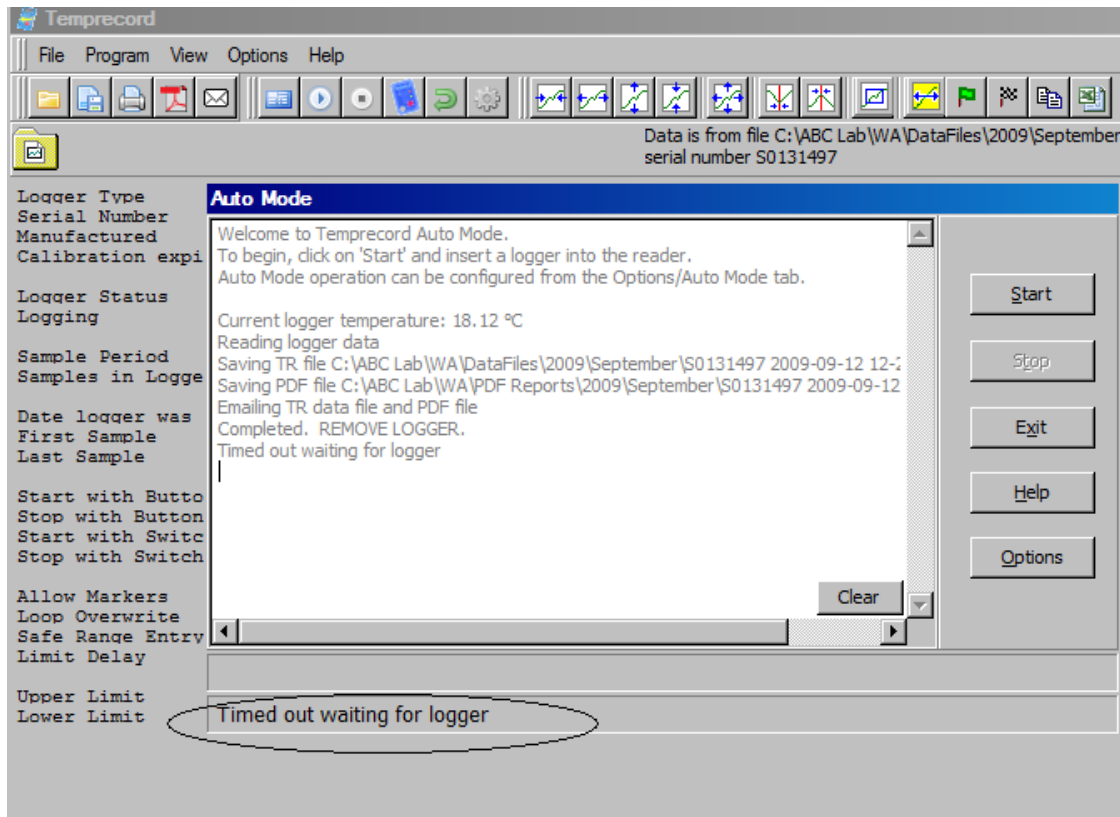
- When Logger is inserted into Reader Interface processing of Logger begins as selected in **Auto Mode Options**
- When using Auto Mode, the path taken will be shown in the inset screen (see below). The current status and prompts will appear at the base of the inset screen, beginning with an instruction “Insert Logger”, see examples below.

Auto Mode



Auto Mode

- Once the logger is removed a further prompt to insert the next logger will appear.
- If in Auto Mode and no activity is detected by the software then the Auto Mode function will time out if not being used (this length of time can be altered in the opening screen). To continue, press “start”.



Important notes:

1. If using the Start on Date option when programming loggers or in Program Defaults, do not select “Start Logger” in Auto Mode (otherwise this will cause an override and the logger will start straight away).
2. If Auto Mode provides an “Error” message, this usually means a function has been selected in Auto Mode that is not compatible with the state of the logger. E.g. “Read logger” has been selected in Auto Mode but the logger has not yet been started therefore there is no data available to read.