

Select/View/Print/PDF -part of the data only

Go to Start, Go to End

View Menu > Graph View > Go to Functions > Go to Start, Go to End

Use the View/Go To/Start Sample and View/Go To/End Sample to position the sample cursor at the start marker sample and end marker sample in the sample record.





Don't confuse the first and last samples with the start end samples. The first and last samples always refer to the first sample in the record and the last sample in the record respectively. The start and end samples refer to the position of the start and end markers, which are used in the calculation of statistical information.



You can also move quickly to the first sample with the Home key, and to the last sample with the End key



The start sample is marked on the graph with the  flag symbol. The end sample is marked on the graph with the  flag symbol.



You can set the current sample under the cursor as the start sample with the F7 key, and as the end sample with the F8 key.

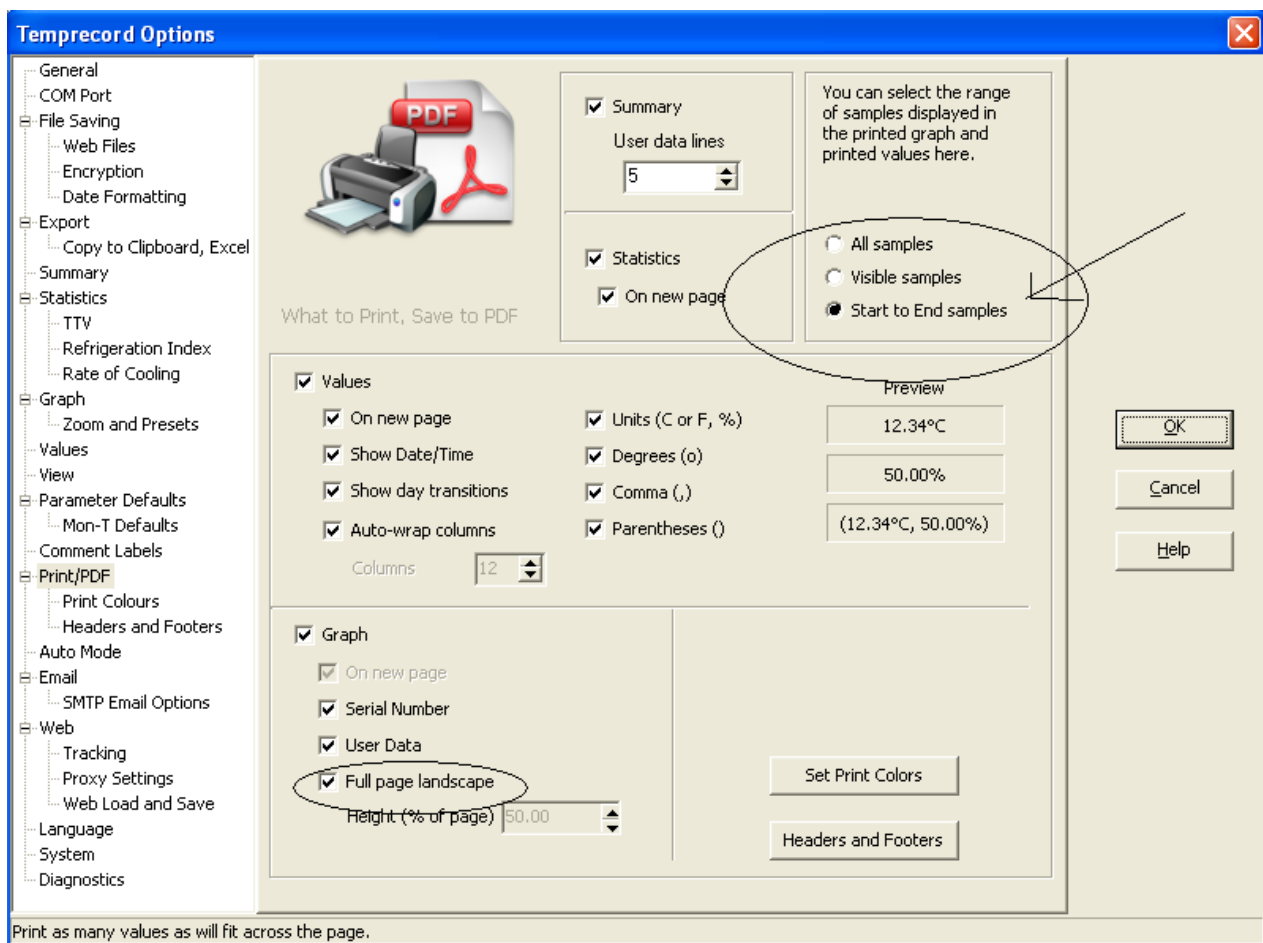


The View/Go To/Start Sample and View/Go To/End Sample functions also work in values view mode, where they position the sample at the top of the window to be the start or end sample.

To print or format to PDF, click appropriate icon (print or PDF), select Print/PDF options and ensure that

Start to End samples has been selected as per image below.

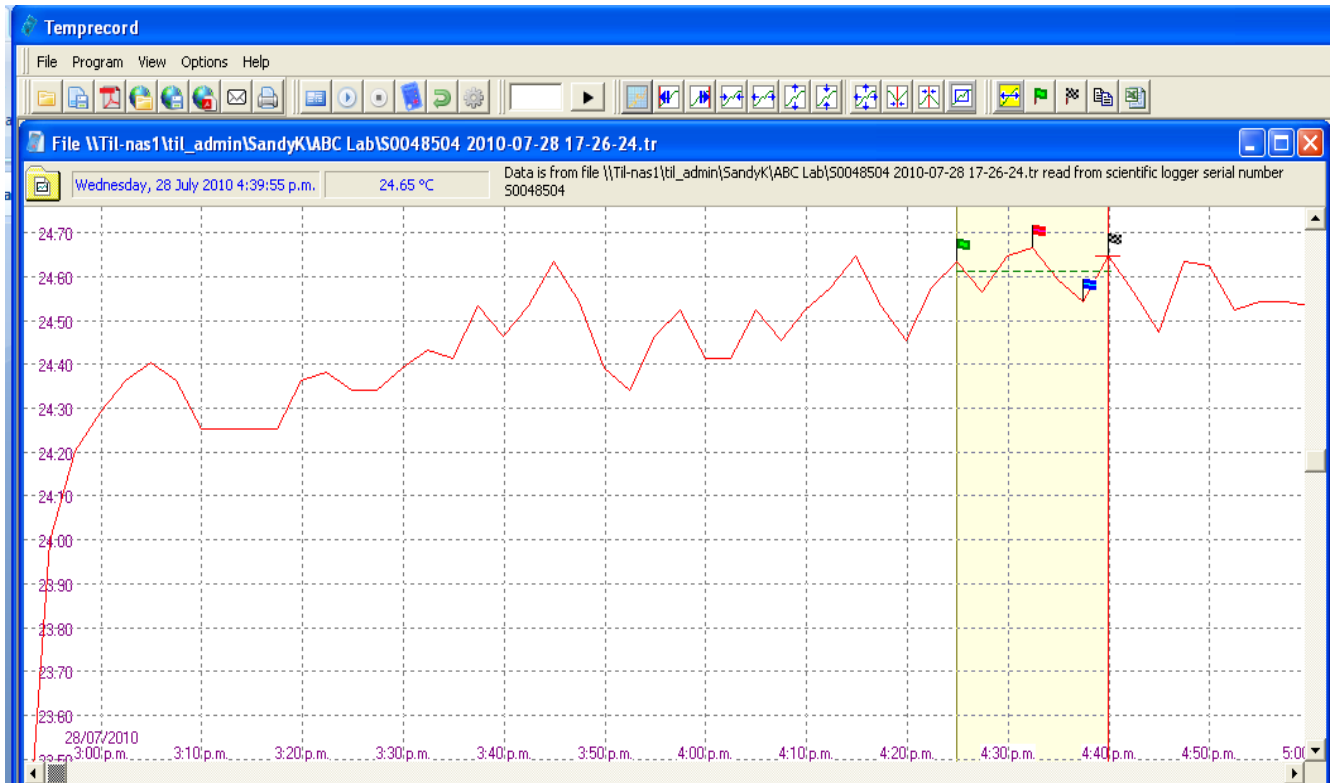
Select/View/Print/PDF Data



Please note the Help button on the very right hand side in the above image. When selecting the Help button, the software will automatically find the related part of the Help document in order to provide assistance.

Select/View/Print/PDF Data

TRW Software Graph View





Select/View/Print/PDF Data

TRW Software Statistics View

File \\Til-nas1\til_admin\SandyK\ABC Lab\S0048504 2010-07-28 17-26-24.tr

10.00 °C 20.00 °C 10.0 %RH 20.0 %RH Data is from file \\Til-nas1\til_admin\SandyK\ABC Lab\S0048504 2010-07-28 17-26-24.tr

Temperature - Statistics for All Samples

Stats record starts at sample	:	1 (Wednesday, 28 July 2010 2:52:25 p.m., 23.20 °C)
and ends at sample	:	61 (Wednesday, 28 July 2010 5:22:25 p.m., 24.16 °C)
Duration of record	:	2:32:30 (61 samples)
Mean	:	24.41 °C
Standard Deviation	:	0.22 °C
Maximum	:	24.67 °C (Wednesday, 28 July 2010 4:32:25 p.m.)
Minimum	:	23.20 °C (Wednesday, 28 July 2010 2:52:25 p.m.)

Upper Limit (20.00 °C)

Time Above	:	2:32:30
Samples Above	:	61
Percentage Above	:	100.0

Lower Limit (10.00 °C)

Time Below	:	0:00:00
Samples Below	:	0
Percentage Below	:	0.0

Both Limits (between 10.00 °C and 20.00 °C)

Time Inside	:	0:00:00
Samples Inside	:	0
Percentage Inside	:	0.0
Time Outside	:	2:32:30
Samples Outside	:	61
Percentage Outside	:	100.0

Temperature - Statistics for Samples Between Start and End Markers

Stats record starts at sample	:	38 (Wednesday, 28 July 2010 4:24:55 p.m., 24.63 °C)
and ends at sample	:	44 (Wednesday, 28 July 2010 4:39:55 p.m., 24.65 °C)
Duration of record	:	0:17:30 (7 samples)
Mean	:	24.61 °C
Standard Deviation	:	0.05 °C
Maximum	:	24.67 °C (Wednesday, 28 July 2010 4:32:25 p.m.)
Minimum	:	24.54 °C (Wednesday, 28 July 2010 4:37:25 p.m.)

Upper Limit (20.00 °C)

Time Above	:	0:17:30
Samples Above	:	7
Percentage Above	:	100.0

Lower Limit (10.00 °C)

Time Below	:	0:00:00
Samples Below	:	0
Percentage Below	:	0.0

Both Limits (between 10.00 °C and 20.00 °C)

Time Inside	:	0:00:00
Samples Inside	:	0
Percentage Inside	:	0.0
Time Outside	:	0:17:30
Samples Outside	:	7
Percentage Outside	:	100.0