

TRW Software

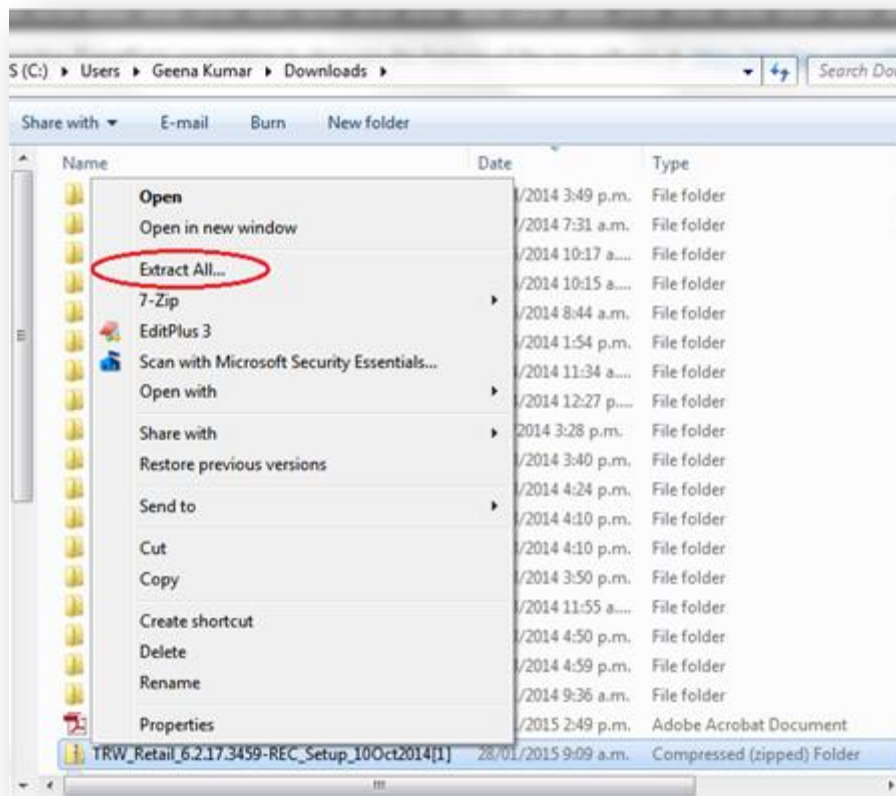
How to install TRW Software

Requirements before first use:

You will need a [Temprecord Data Logger](#), [Reader Interface](#) and the [TRW software](#). Software is available on disc supplied with the Reader Interface, or by downloading from <http://www.temprecord.com/our-software/software-downloads/>

Do not plug in the Temprecord Reader Interface until after the software is installed.

1. Save the downloaded .zip file to a folder (say on your Desktop).
2. Since it is a compressed ZIP file you will need to 'extract' the 'trw-setup' file by **right-clicking on the downloaded "TRW V5.28.0.2471 Setup" zipped file** and selecting '**Extract all**' from the right click menu.



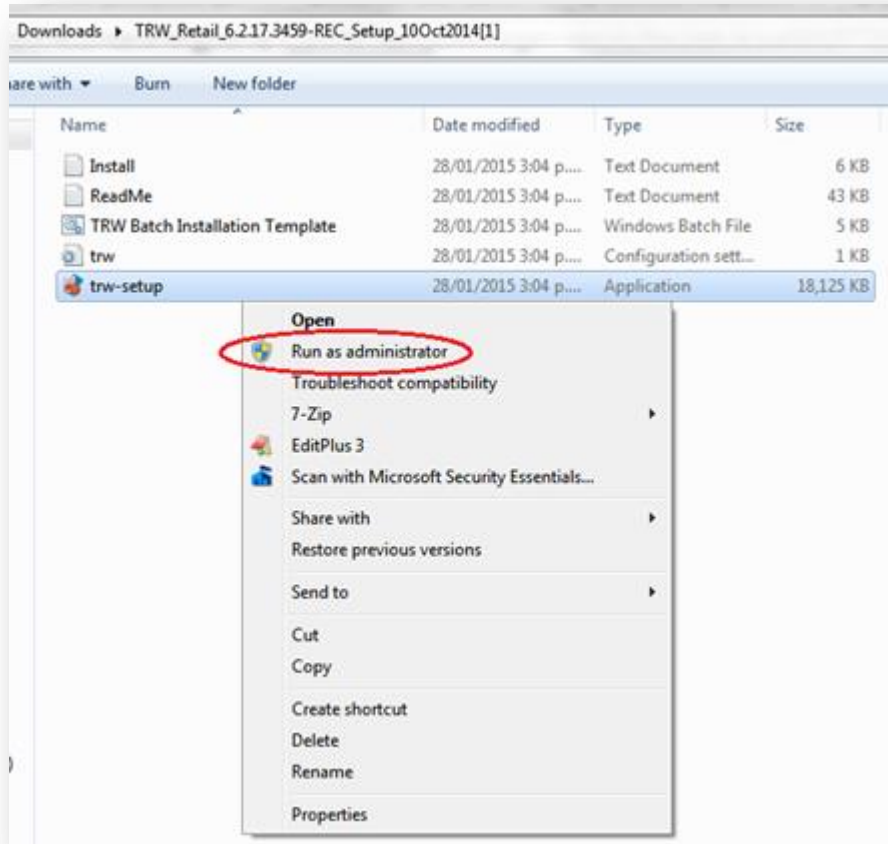
Right click your mouse on the .zip file (in your Download's folder) and select 'Extract All....'

3. Once the files are extracted, **you must log on as Administrator to install software (you may require your IT person to install this on your PC.)**

Temprecord Software Installation Guide



4. Right Click on the **trw-setup.exe** file and select **'Run as administrator'**.



5. Please note that if you don't have **'Administrative Rights'** then you will not be able to install any Software on your computer.
6. Follow on-screen dialog boxes as installation progresses. You may get some Windows security warnings during installation. This is normal. Click **'Continue Anyway'** for any pop-up messages during the installation process.

NOTE: If you are running the following operating systems:

- Windows 7 64 bit operating systems (but current version will work with Windows 7 32 bit systems)
- Windows 8

You will need to download the drivers for Windows 7 64 bit and Windows 8 from the Temprecord website at <http://www.temprecord.com/our-software/software-downloads/>.

You can also download the drivers directly here:

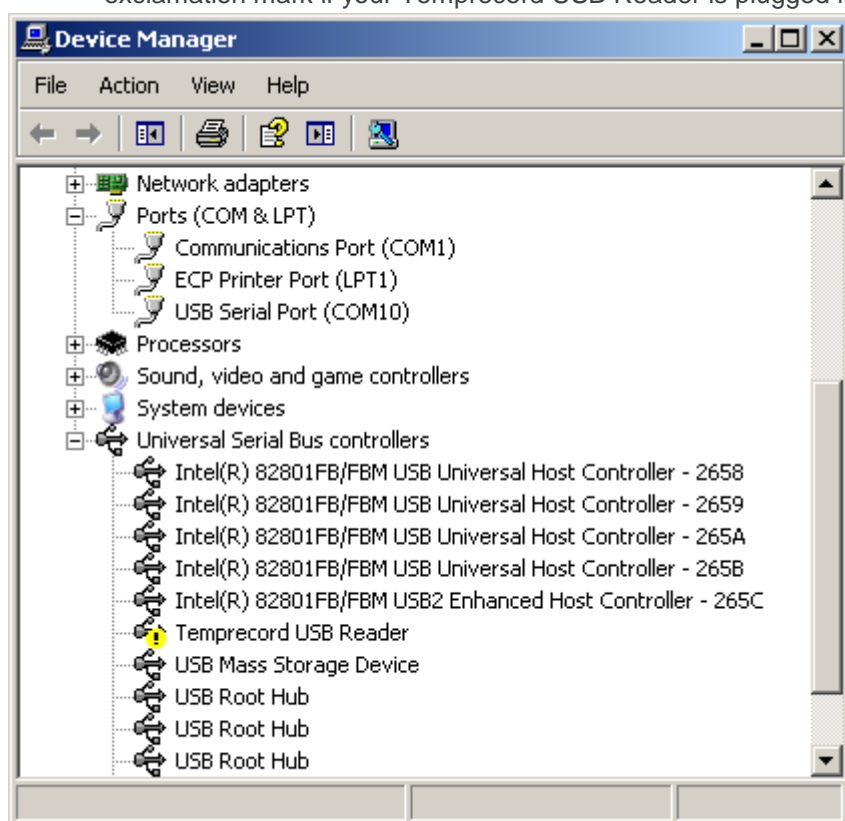
<http://temprecord.com/Downloads/Temprecord%20USB%20Driver%20Pack.zip>

You must **unzip the driver folder** as per the instructions above and **log on as Administrator** to install the drivers, preferably without the reader plugged in, and then reboot your computer. In the next release of software, which is due soon, the new drivers will be included.

Temprecord Software Installation Guide

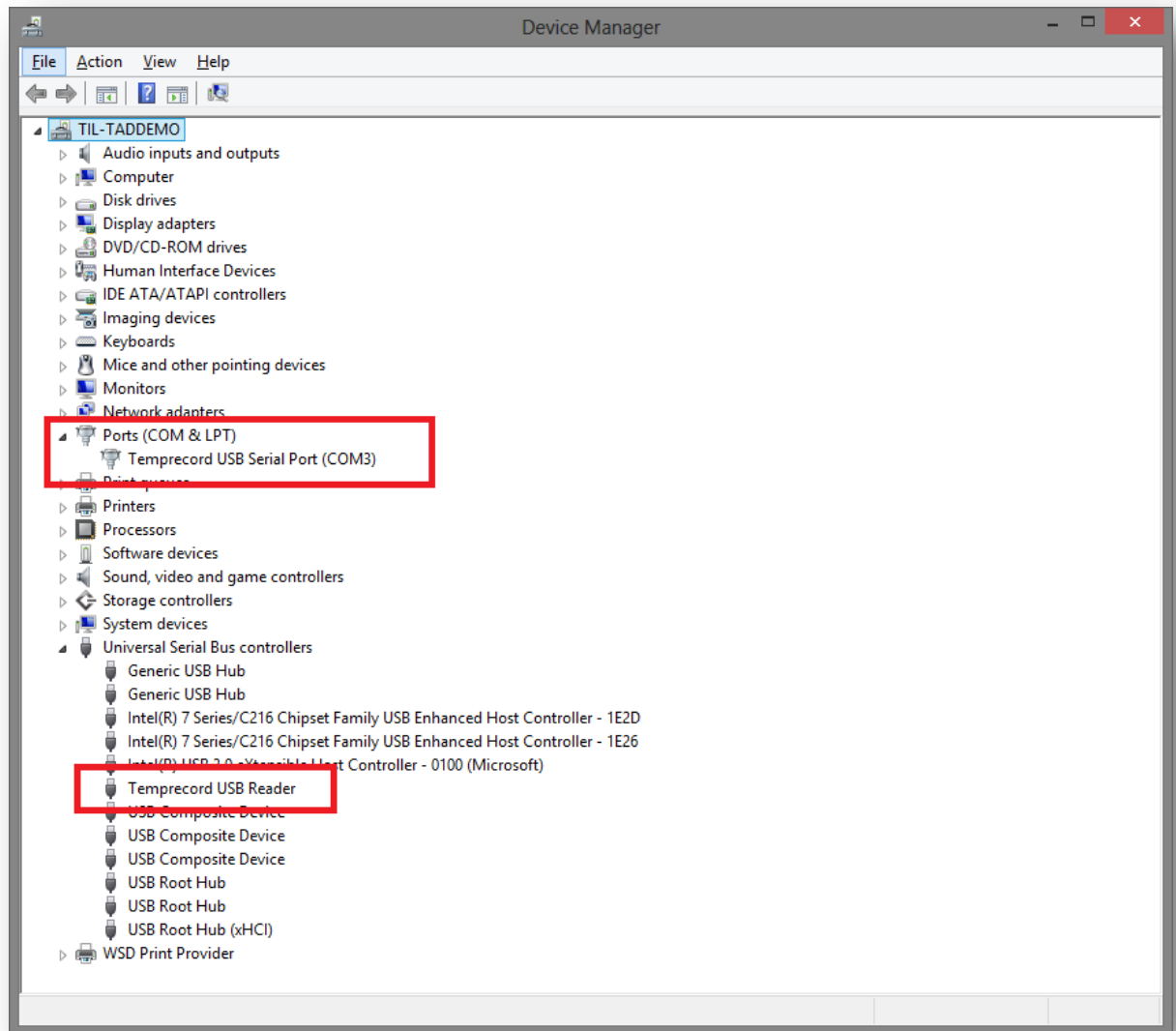
How to install the Reader Interface

7. Plug the **Temprecord Reader Interface** into a USB Port on your computer.
8. On your Windows Computer please navigate through '**Control Panel**' then select '**Device Manager**'.
9. Open the TRW Software then click '**Options**' then '**COM Port**' and select "**Look for USB Reader**". *TRW will find your USB Reader automatically but if not, please follow the Device Manager instructions set out below:*
 - Windows may report "**Unknown Device**" or "**Temprecord USB Reader**" with yellow exclamation mark if your Temprecord USB Reader is plugged into your PC.

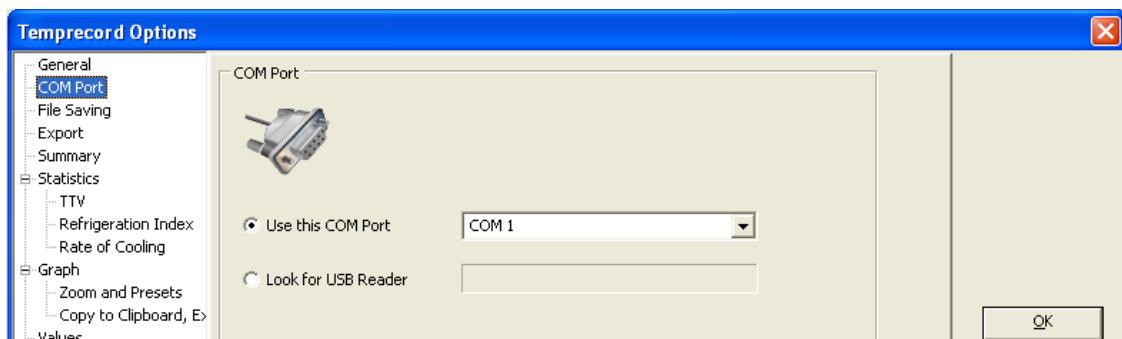


- Right-Click on the "**Unknown Device**" then click '**Update Driver**' When Hardware Update Wizard pops up select "**No, not this time**" then click 'Next'.
- Select "**Install from a list or specific location**" then click '**Next**'. Click "**Browse**" then explore to "**C:\Program Files\Temprecord\TRWDrivers**" then click '**Next**'. Click '**Continue Anyway**' when prompted.
- When installation complete, go to '**Device Manager**' and click "**Ports (COM & LPT)**". Windows should have assigned '**USB Serial Port (COMX)**'. The example below shows COM3.

Temprecord Software Installation Guide



- The 'USB COM Port on COM X' that was configured on 'Device Manager' should appear here otherwise select the COM Port .e.g COM3



10. Place a Temprecord data logger into the Reader then press '**Space Bar**'. This should access the data logger and display Summary screen with Serial Number and type of data logger at the top.

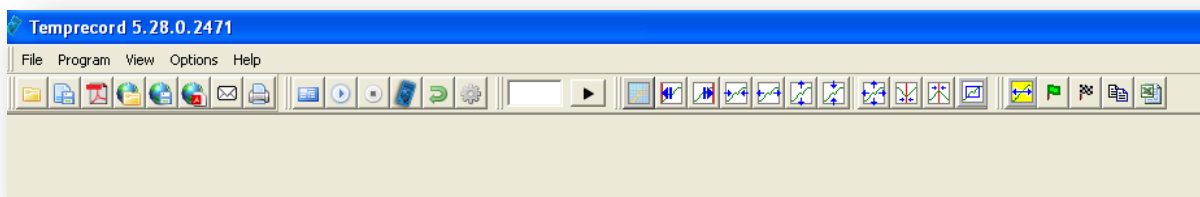
Temprecord Software Installation Guide

To access logger

Insert logger in Reader Interface ensuring logger is placed in reader as far as it can go, and the hole is visible outside the reader. **Access logger by tapping the Space Bar on the keyboard.**

Software Quick Icons

Note, using the menu tabs or right clicking mouse button will also allow access to the some of the same tasks as the quick icons. Hover over the quick icons to bring up hints that identify function.



Programme a logger for the first time

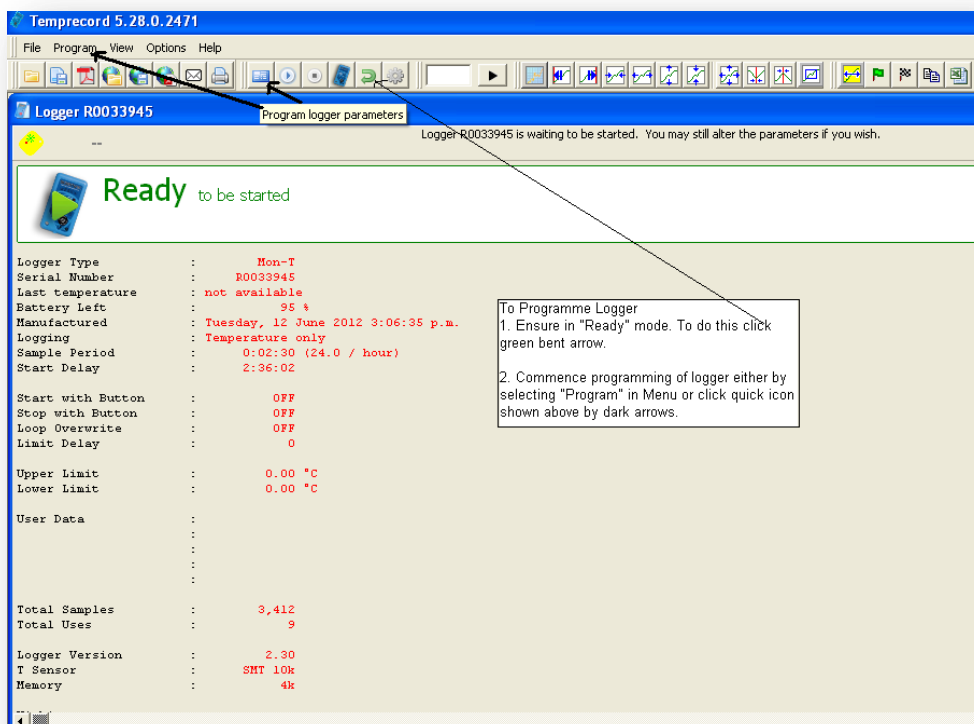
The following are quick instructions only.

Please note there is a full Help document built into:

1. The software in the Menu bar and;
2. PDF format in the Start/All Programs/TRW folder in your computer.

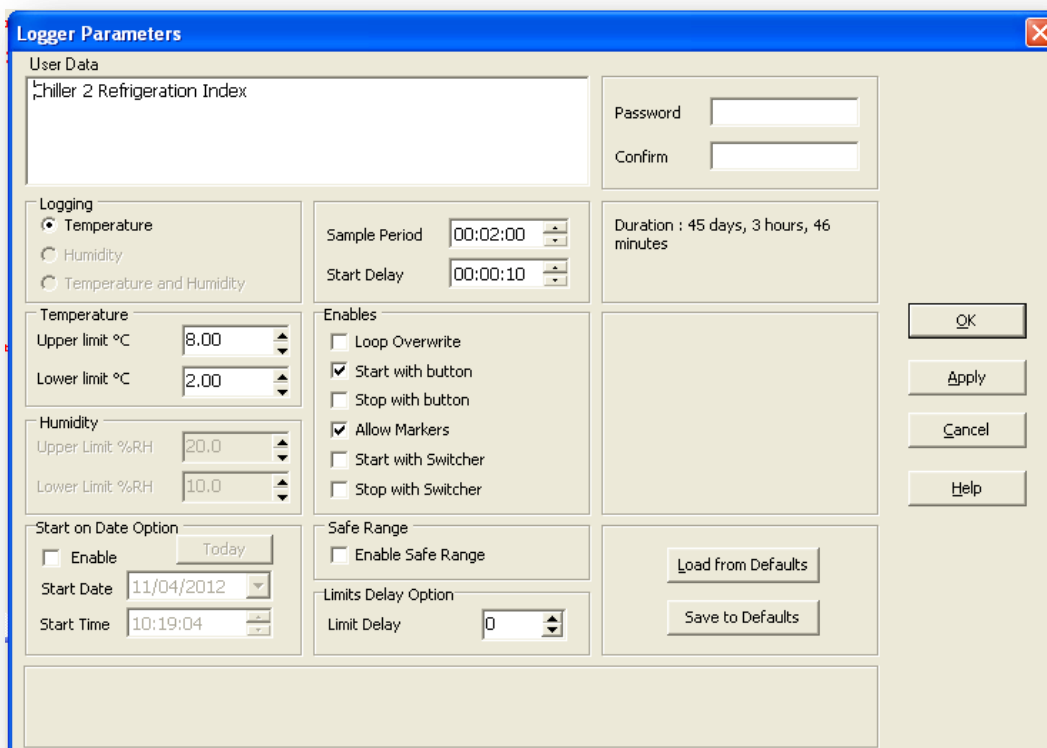
To programme logger

Either select **Program** on Menu bar or click **Parameters** icon and populate as required. To do this the logger must first be in "Ready" mode. See diagram below.



Temprecord Software Installation Guide

Parameters screen for population



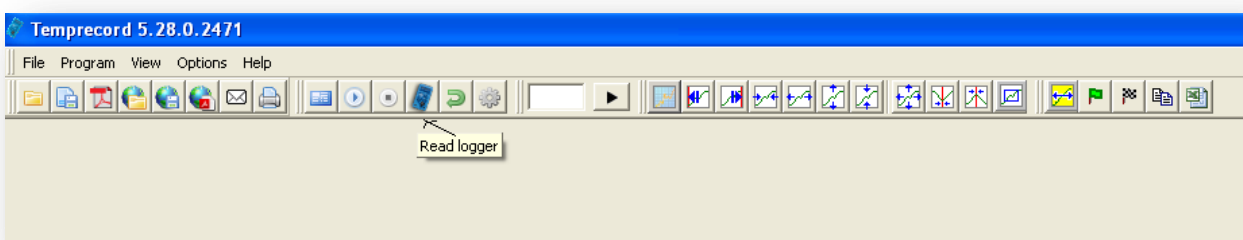
Start Logger

Either start with software using **Start Logger** icon, or use button on logger **if enabled in software** when programming the logger. Read label on logger for instructions for button.



Read Logger

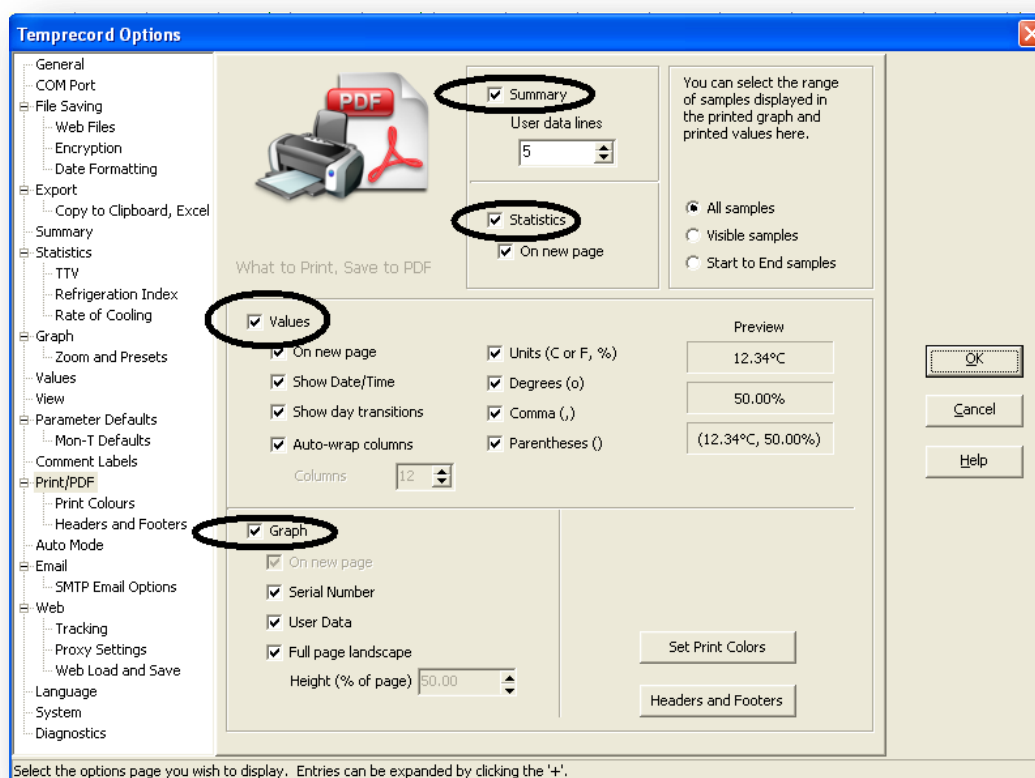
To read logger click quick icon showing the shape of a blue logger as shown in the screenshot below.



Temprecord Software Installation Guide

Print or create PDF file

Click **Print** or **PDF** icon shown above then select **Print/PDF Options**. Then select as required – remember to enable all Summary, Statistics, Graph and Values screens as required.



To save a file

On Menu bar select **File/Save File** or just click the quick icon **Save Temprecord Data File to Disc** (second icon from left). To save the file in the same folder every time without having to browse to find the folder, please see separate attached document – “File Saving”.

Stop Logger

Click **Stop Logger** icon. Note that data will still be in the logger and either the green or red LED will continue to flash either within limits (green) or outside limits (red).

Re-Use Logger.

To re-use or re-programme the logger, it must be in a ready state. Click **Reuse Logger** (bent green arrow) icon. Data will be cleared and logger LED will no longer flash until recommencement of logging.

Logger is now ready to be started again.

Contact us...

Email: info@temprecord.com

Phone: +64 274 9825